







# FIRE DOOR INFORMATION

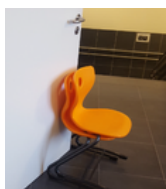
## LOW-RISE FLATS

### Your Flat Entrance Fire Door & How do they keep you and other residents safe

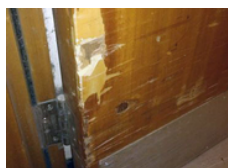
	<p><b>How do I know it is a Fire Door.</b>  <b>How do they keep me and other residents safe.</b>          It will have 3 hinges</p> <p>A door closer</p> <p>Smoke seals &amp; intumescent strips in the frame</p>	
	<p>The door helps form a compartment to stop a fire spreading throughout the whole building.          Fire Doors have a rating explaining how long it has been tested.          Your flat door is FD30 minute rated.</p>	
	<p>Fire Doors in communal areas will have the following signage:</p> <p>Fire Door Keep Locked (Cupboard Doors)</p> <p>Fire Door Keep Closed (Corridors / Communal Doors)</p>	
<p>When will my flat entrance and other fire doors be inspected?</p>	<p><b>These doors are inspected on a 3 yearly basis</b></p>	
<p>Why are these doors inspected?</p>	<p><b>The Grenfell Tower Enquiry heard that none of the flats had doors that met fire safety standards.</b>  <b>72 people were tragically killed by the fire which ultimately engulfed the building.</b></p>	

# Life Saving Information

## Common problems with the use of Fire Doors



**Propping Fire Doors Open** - This is a common problem – fire doors are often left open for convenience – perhaps people are moving things in and out



**Damaged fire doors** - Damage to a fire door can render it ineffective. In order for a fire door to perform effectively, it must be in full working order.



**Damage to intumescent seals** - Seals can become torn, cut, or otherwise physically damaged through general wear and tear or by being caught when the door is in use. Damaged seals may not expand as required, reducing their effectiveness.

- You can help us keep you and your neighbours safe by never removing, disengaging or tampering with a fire door's self-closing device, or prop or wedge it open .
- Don't cause any damage to ANY fire doors
- Don't repair or fit ANY fire doors yourself, never drill or cut into your front door, or alter or repair it yourself
- Don't let anyone else tamper with or damage ANY fire doors.

If you notice any damage to ANY fire door or flat entrance door please contact **01724 279900** or **enquiries@ongo.co.uk**